

Cyanine5 maleimide

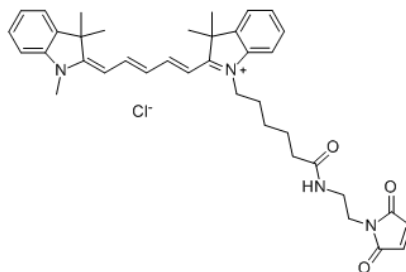
Cyanine5 maleimide is a mono-reactive dye which selectively couples with thiol groups (for example, with cysteines in peptides and proteins) to give labeled conjugates.

Cyanine5 is an analog of Cy5®, a common fluorophore which is compatible with various instrumentation like microscopes, imagers, and fluorescence readers.

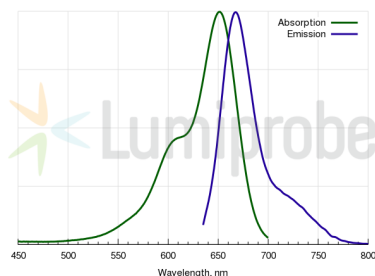
For the labeling of antibodies and sensitive proteins we recommend to use the water soluble sulfo-Cyanine5 maleimide.



Quantity	Cat. #
1 mg	13080
5 mg	23080
25 mg	43080
50 mg	53080
100 mg	63080



Absorption and emission spectra of Cy5 fluorophore



General properties

Appearance:	dark blue powder
Molecular weight:	641.24
Molecular formula:	$C_{28}H_{16}ClN_4O_2$
Solubility:	soluble in organic solvents (DMF, DMSO, dichloromethane), insoluble in water
Quality control:	NMR 1H , HPLC-MS (95%)
Storage conditions:	Storage: 24 months after receipt at $-20^\circ C$ in the dark. Transportation: at room temperature for up to 3 weeks. Avoid prolonged exposure to light. Desiccate.

Spectral properties

Excitation maximum, nm:	646
ϵ , $L \cdot mol^{-1} \cdot cm^{-1}$:	250000
Emission maximum, nm:	662
Fluorescence quantum yield:	0.2